

| <b>Draper 1 Campus Enrollment and Demographics by Grade</b> |          |          |          |          |          |          |          |            |
|---|----------|----------|----------|----------|----------|----------|----------|------------|
| <b>2017-18</b>  | <b>K</b> | <b>1</b> | <b>2</b> | <b>3</b> | <b>4</b> | <b>5</b> | <b>6</b> | <b>TTL</b> |
| Student Count   | 122      | 113      | 127      | 97       | 95       | 65       | 62       | 681        |
| New Enrollment  | 119      | 35       | 61       | 44       | 39       | 9        | 15       | 322        |
| New Enroll. %   | 98%      | 31%      | 48%      | 45%      | 41%      | 14%      | 24%      | 47%        |
| Attendance %  | 95.71%   | 95.51%   | 95.35%   | 95.08%   | 95.14%   | 96.72%   | 97.13%   | 95.83%     |
| Male  | 64       | 53       | 59       | 46       | 53       | 33       | 30       | 338        |
| Female  | 58       | 60       | 68       | 51       | 42       | 32       | 32       | 343        |
| Ethnicity (H)   | 9        | 12       | 13       | 22       | 9        | 14       | 9        | 88         |
| Ethnicity %   | 7.38%    | 10.62%   | 10.24%   | 22.68%   | 9.47%    | 21.54%   | 14.52%   | 13%        |
| White (W)   | 73       | 63       | 63       | 49       | 54       | 29       | 41       | 372        |
| Am. Indian (I)  | <5       | <5       | <5       | <5       | <5       | <5       | <5       | <5         |
| Asian (A)   | 33       | 33       | 38       | 22       | 24       | 16       | 9        | 175        |
| Black (B)   | <5       | <5       | <5       | <5       | <5       | <5       | <5       | 12         |
| Pacific Isl. (P)  | <5       | <5       | <5       | <5       | <5       | <5       | <5       | 16         |
| Mixed Race  | <5       | <5       | <5       | <5       | <5       | <5       | <5       | 18         |
| Minority %  | 32.79%   | 33.63%   | 40.16%   | 26.80%   | 33.68%   | 33.85%   | 19.35%   | 32.45%     |
| SPED  | <5       | 8        | 12       | 7        | 8        | 5        | 13       | 57         |
| SPED %  | 3.28%    | 7.08%    | 9.45%    | 7.22%    | 8.42%    | 7.69%    | 20.97%   | 8.37%      |
| F/R Lunch   | 22       | 23       | 17       | 20       | 19       | 15       | 10       | 126        |
| F/R Lunch %   | 18.03%   | 20.35%   | 13.39%   | 20.62%   | 20.00%   | 23.08%   | 16.13%   | 18.50%     |
| Lim. Engl. (LEP)  | <5       | <5       | 26       | 21       | 13       | 10       | 9        | 83         |
| LEP %   | 0.00%    | 3.54%    | 20.47%   | 21.65%   | 13.68%   | 15.38%   | 14.52%   | 12.2%      |

**Data not yet updated to 2017-18 school year**

\* 2017 Test Data for Comparison Schools. 2018 data will be available late August-October.

**APA School is located within the boundaries of these neighborhood schools**

|  |                       |       |
|--|-----------------------|-------|
| AMERICAN PREPARATORY ACADEMY - DRAPER #1 | English Language Arts | ##### |
| AMERICAN PREPARATORY ACADEMY - DRAPER #1 | Mathematics           | ##### |
| AMERICAN PREPARATORY ACADEMY - DRAPER #1 | Science               | ##### |

|   |                       |       |
|---|-----------------------|-------|
| SUMMIT ACADEMY - BLUFFDALE CAMPUS (K-6) | English Language Arts | ##### |
| SUMMIT ACADEMY - BLUFFDALE CAMPUS (K-6) | Mathematics           | ##### |
| SUMMIT ACADEMY - BLUFFDALE CAMPUS (K-6) | Science               | ##### |
| WILLOW SPRINGS SCHOOL                   | English Language Arts | ##### |
| WILLOW SPRINGS SCHOOL                   | Mathematics           | ##### |
| WILLOW SPRINGS SCHOOL                   | Science               | ##### |
| CRESCENT SCHOOL                         | English Language Arts | ##### |
| CRESCENT SCHOOL                         | Mathematics           | ##### |
| CRESCENT SCHOOL                         | Science               | ##### |
| SPRUCEWOOD SCHOOL                       | English Language Arts | ##### |
| SPRUCEWOOD SCHOOL                       | Mathematics           | ##### |
| SPRUCEWOOD SCHOOL                       | Science               | ##### |

### Nearby Charter School

|  |                       |       |
|--|-----------------------|-------|
| AMERICAN PREPARATORY ACADEMY - DRAPER #2 | English Language Arts | ##### |
| AMERICAN PREPARATORY ACADEMY - DRAPER #2 | Mathematics           | ##### |
| AMERICAN PREPARATORY ACADEMY - DRAPER #2 | Science               | ##### |
| SUMMIT ACADEMY - DRAPER CAMPUS (6-8)     | English Language Arts | ##### |
| SUMMIT ACADEMY - DRAPER CAMPUS (6-8)     | Mathematics           | ##### |
| SUMMIT ACADEMY - DRAPER CAMPUS (6-8)     | Science               | ##### |
| WILLOW SPRINGS SCHOOL                    | English Language Arts | ##### |
| WILLOW SPRINGS SCHOOL                    | Mathematics           | ##### |
| WILLOW SPRINGS SCHOOL                    | Science               | ##### |
| CRESCENT SCHOOL                          | English Language Arts | ##### |
| CRESCENT SCHOOL                          | Mathematics           | ##### |
| CRESCENT SCHOOL                          | Science               | ##### |
| SPRUCEWOOD SCHOOL                        | English Language Arts | ##### |
| SPRUCEWOOD SCHOOL                        | Mathematics           | ##### |
| SPRUCEWOOD SCHOOL                        | Science               | ##### |
| CHANNING HALL                            | English Language Arts | ##### |
| CHANNING HALL                            | Mathematics           | ##### |
| CHANNING HALL                            | Science               | ##### |
| ROSAMOND SCHOOL                          | English Language Arts | ##### |
| ROSAMOND SCHOOL                          | Mathematics           | ##### |
| ROSAMOND SCHOOL                          | Science               | ##### |

|  |                  |       |
|--|------------------|-------|
| AMERICAN PREPARATORY ACADEMY - DRAPER #3 | English Language |       |
| AMERICAN PREPARATORY ACADEMY - DRAPER #3 | Arts             | 62.2% |
| AMERICAN PREPARATORY ACADEMY - DRAPER #3 | Mathematics      | 31.3% |
| AMERICAN PREPARATORY ACADEMY - DRAPER #3 | Science          | 57.5% |
| INDIAN HILLS MIDDLE (6-8)                | English Language |       |
| INDIAN HILLS MIDDLE (6-8)                | Arts             | 55.8% |
| INDIAN HILLS MIDDLE (6-8)                | Mathematics      | 49.3% |
| INDIAN HILLS MIDDLE (6-8)                | Science          | 65.5% |
| DRAPER PARK MIDDLE                       | English Language |       |
| DRAPER PARK MIDDLE                       | Arts             | 64.9% |
| DRAPER PARK MIDDLE                       | Mathematics      | 61.3% |
| DRAPER PARK MIDDLE                       | Science          | 78.0% |
| RIVERTON HIGH                            | English Language |       |
| RIVERTON HIGH                            | Arts             | 45.5% |
| RIVERTON HIGH                            | Mathematics      | 35.1% |
| RIVERTON HIGH                            | Science          | 46.0% |
| CORNER CANYON HIGH                       | English Language |       |
| CORNER CANYON HIGH                       | Arts             | 52.3% |
| CORNER CANYON HIGH                       | Mathematics      | 66.0% |
| CORNER CANYON HIGH                       | Science          | 58.7% |
| JORDAN HIGH                              | English Language |       |
| JORDAN HIGH                              | Arts             | 33.4% |
| JORDAN HIGH                              | Mathematics      | 30.3% |
| JORDAN HIGH                              | Science          | 31.2% |
| ALTA HIGH                                | English Language |       |
| ALTA HIGH                                | Arts             | 47.2% |
| ALTA HIGH                                | Mathematics      | 48.8% |
| ALTA HIGH                                | Science          | 49.9% |

| Language Arts |          |               |                   |                   |                   |                                   |                              |
|---------------|----------|---------------|-------------------|-------------------|-------------------|-----------------------------------|------------------------------|
|               | # Tested | # of Students | % Proficient 2016 | % Proficient 2017 | % Proficient 2018 | Difference Grade Level Comparison | Difference Cohort Comparison |
| 3rd           | 83       | 93            | 62                | 67                | 51                | -16                               | NA                           |
| 4th           | 84       | 86            | 38                | 40                | 56                | 16                                | -11                          |
| 5th           | 54       | 60            | 49                | 47                | 63                | 16                                | 23                           |
| 6th           | 50       | 55            | 59                | 56                | 56                | 0                                 | 9                            |

| Math |          |               |                   |                   |                   |                                   |                              |
|------|----------|---------------|-------------------|-------------------|-------------------|-----------------------------------|------------------------------|
|      | # Tested | # of Students | % Proficient 2016 | % Proficient 2017 | % Proficient 2018 | Difference Grade Level Comparison | Difference Cohort Comparison |
| 3rd  | 86       | 93            | 57                | 61                | 51                | -10                               | NA                           |
| 4th  | 84       | 86            | 53                | 58                | 61                | 3                                 | 0                            |
| 5th  | 55       | 60            | 49                | 58                | 62                | 4                                 | 5                            |
| 6th  | 51       | 55            | 42                | 53                | 59                | 6                                 | 4                            |

| Science |          |               |                   |                   |                   |                                   |                              |
|---------|----------|---------------|-------------------|-------------------|-------------------|-----------------------------------|------------------------------|
|         | # Tested | # of Students | % Proficient 2016 | % Proficient 2017 | % Proficient 2018 | Difference Grade Level Comparison | Difference Cohort Comparison |
| 4th     | 84       | 86            | 41                | 46                | 57                | 11                                | NA                           |
| 5th     | 53       | 60            | 60                | 55                | 62                | 7                                 | 16                           |
| 6th     | ?        | 55            | 49                | 66                |                   |                                   | NA                           |

| Core Knowledge |        |      |      |      |      |         |      |         |      |
|----------------|--------|------|------|------|------|---------|------|---------|------|
| Grade          | Campus | LA   |      | Math |      | Science |      | History |      |
|                |        | 2018 | 2017 | 2018 | 2017 | 2018    | 2017 | 2018    | 2017 |
| 1st            | DRA 1  | 88%  | 82%  | 81%  | 81%  | 80%     | 81%  | 80%     | 75%  |
|                | DRA 2  | 84%  | 88%  | 83%  | 85%  | 82%     | 84%  | 81%     | 79%  |
|                | WV 1   | 77%  | 76%  | 73%  | 70%  | 74%     | 72%  | 72%     | 64%  |
|                | WV 2   | 84%  | 83%  | 75%  | 80%  | 79%     | 81%  | 78%     | 78%  |
|                | Salem  | 80%  | 88%  | 75%  | 78%  | 78%     | 80%  | 75%     | 77%  |
| 2nd            | DRA 1  | 83%  | 84%  | 75%  | 77%  | 85%     | 89%  | 78%     | 80%  |
|                | DRA 2  | 87%  | 88%  | 78%  | 79%  | 86%     | 87%  | 80%     | 79%  |
|                | WV 1   | 75%  | 74%  | 65%  | 67%  | 75%     | 78%  | 66%     | 63%  |
|                | WV 2   | 75%  | 69%  | 67%  | 63%  | 75%     | 72%  | 66%     | 67%  |
|                | Salem  | 82%  | 76%  | 70%  | 71%  | 82%     | 81%  | 72%     | 74%  |
| 3rd            | DRA 1  | 76%  | 79%  | 71%  | 74%  | 78%     | 82%  | 62%     | 66%  |
|                | DRA 2  | 73%  | 78%  | 74%  | 79%  | 77%     | 81%  | 63%     | 67%  |
|                | WV 1   | 61%  | 60%  | 61%  | 63%  | 68%     | 61%  | 53%     | 53%  |
|                | WV 2   | 72%  | 69%  | 63%  | 67%  | 70%     | 73%  | 58%     | 64%  |
|                | Salem  | 63%  | 68%  | 68%  | 65%  | 73%     | 72%  | 49%     | 57%  |
| 4th            | DRA 1  | 73%  | 77%  | 63%  | 72%  | 72%     | 77%  | 67%     | 76%  |
|                | DRA 2  | 73%  | 82%  | 64%  | 74%  | 74%     | 81%  | 67%     | 70%  |
|                | WV 1   | 57%  | 64%  | 50%  | 53%  | 58%     | 61%  | 47%     | 55%  |
|                | WV 2   | 63%  | 64%  | 55%  | 61%  | 65%     | 67%  | 56%     | 56%  |
|                | Salem  | 73%  | 76%  | 59%  | 66%  | 68%     | 67%  | 63%     | 64%  |
| 5th            | DRA 1  | 84%  | 76%  | 73%  | 74%  | 82%     | 66%  | 71%     | 66%  |
|                | DRA 2  | 74%  | 84%  | 66%  | 75%  | 61%     | 71%  | 58%     | 73%  |
|                | WV 1   | 63%  | 67%  | 52%  | 55%  | 55%     | 51%  | 57%     | 62%  |
|                | WV 2   | 66%  | 66%  | 61%  | 63%  | 57%     | 55%  | 52%     | 52%  |
|                | Salem  | 75%  | 73%  | 66%  | 65%  | 64%     | 60%  | 60%     | 64%  |
| 6th            | DRA 1  | 70%  |      | 65%  |      | 70%     |      | 66%     |      |

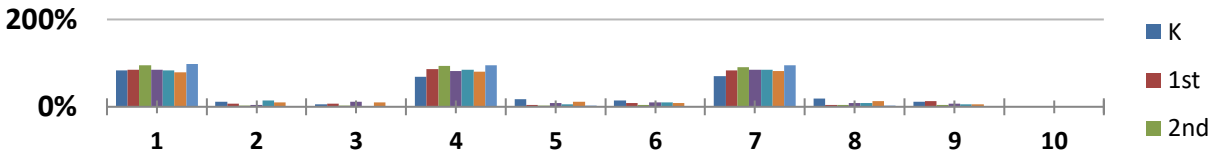
|  |       |     |  |     |  |     |  |     |  |
|--|-------|-----|--|-----|--|-----|--|-----|--|
|  | DRA 2 | 65% |  | 67% |  | 64% |  | 61% |  |
|  | WV 1  | 43% |  | 48% |  | 51% |  | 44% |  |
|  | WV 2  | 53% |  | 60% |  | 62% |  | 55% |  |
|  | Salem | 57% |  | 62% |  | 65% |  | 60% |  |

All data is taken from Composite score - U of O standards 2010

|                       |           |           | K   | 1st | 2nd | 3rd | 4th | 5th | 6th |
|-----------------------|-----------|-----------|-----|-----|-----|-----|-----|-----|-----|
| 2016-17               | BOY       | Benchmark | 158 | 75  | 84  | 78  | 42  | 46  | 67  |
|                       |           | Strategic | 21  | 7   | 2   | 4   | 7   | 6   | 1   |
|                       |           | Intensive | 10  | 7   | 2   | 10  | 1   | 6   | 0   |
|                       | MOY       | Benchmark | 136 | 76  | 80  | 76  | 67  | 69  | 63  |
|                       |           | Strategic | 33  | 4   | 2   | 8   | 4   | 10  | 2   |
|                       |           | Intensive | 27  | 8   | 3   | 9   | 8   | 7   | 1   |
|                       | EOY       | Benchmark | 134 | 74  | 76  | 75  | 84  | 72  | 62  |
|                       |           | Strategic | 35  | 4   | 4   | 7   | 9   | 11  | 2   |
|                       |           | Intensive | 21  | 11  | 4   | 6   | 6   | 5   | 1   |
| Net Change BOY to EOY | Benchmark | -24       | -1  | -8  | -3  | 42  | 26  | -5  |     |
|                       | Strategic | 14        | -3  | 2   | 3   | 2   | 5   | 1   |     |
|                       | Intensive | 11        | 4   | 2   | -4  | 5   | -1  | 1   |     |

|         |     |           | K   | 1st | 2nd | 3rd | 4th | 5th | 6th |
|---------|-----|-----------|-----|-----|-----|-----|-----|-----|-----|
| 2016-17 | BOY | Benchmark | 84% | 84% | 95% | 85% | 84% | 79% | 99% |
|         |     | Strategic | 11% | 8%  | 2%  | 4%  | 14% | 10% | 1%  |
|         |     | Intensive | 5%  | 8%  | 2%  | 11% | 2%  | 10% | 0%  |
|         | MOY | Benchmark | 69% | 86% | 94% | 82% | 85% | 80% | 95% |
|         |     | Strategic | 17% | 5%  | 2%  | 9%  | 5%  | 12% | 3%  |
|         |     | Intensive | 14% | 9%  | 4%  | 10% | 10% | 8%  | 2%  |
|         | EOY | Benchmark | 71% | 83% | 90% | 85% | 85% | 82% | 95% |
|         |     | Strategic | 18% | 4%  | 5%  | 8%  | 9%  | 13% | 3%  |
|         |     | Intensive | 11% | 12% | 5%  | 7%  | 6%  | 6%  | 2%  |

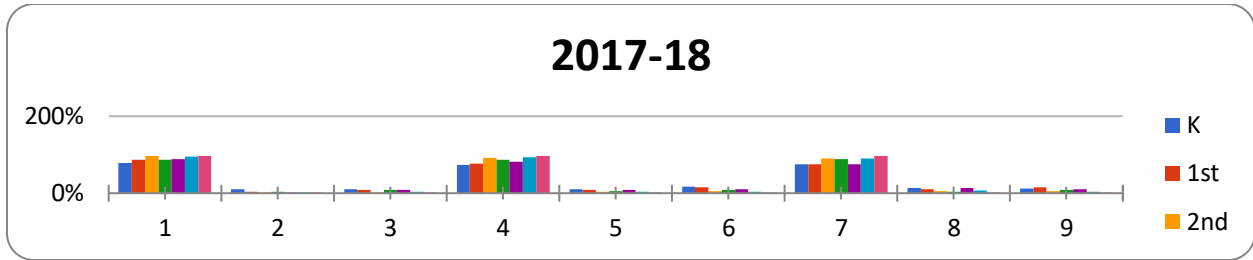
## 2016-17



|            |           | K         | 1st | 2nd | 3rd | 4th | 5th | 6th |    |
|------------|-----------|-----------|-----|-----|-----|-----|-----|-----|----|
| 2017-18    | BOY       | Benchmark | 85  | 94  | 105 | 77  | 67  | 53  | 53 |
|            |           | Strategic | 12  | 4   | 1   | 4   | 2   | 1   | 1  |
|            |           | Intensive | 11  | 10  | 3   | 8   | 7   | 2   | 1  |
|            | MOY       | Benchmark | 77  | 84  | 97  | 80  | 60  | 55  | 54 |
|            |           | Strategic | 11  | 9   | 3   | 5   | 6   | 2   | 1  |
|            |           | Intensive | 17  | 17  | 5   | 8   | 7   | 2   | 1  |
|            | EOY       | Benchmark | 79  | 81  | 98  | 82  | 42  | 26  | 50 |
|            |           | Strategic | 14  | 11  | 5   | 3   | 8   | 2   | 1  |
|            |           | Intensive | 12  | 16  | 6   | 8   | 6   | 1   | 1  |
| Net Change | Benchmark | -6        | -13 | -7  | 5   | -25 | -27 | -3  |    |
|            | Strategic | 2         | 7   | 4   | -1  | 6   | 1   | 0   |    |
|            | Intensive | 1         | 6   | 3   | 0   | -1  | -1  | 0   |    |

|            |           | K         | 1st  | 2nd | 3rd | 4th  | 5th | 6th |     |
|------------|-----------|-----------|------|-----|-----|------|-----|-----|-----|
| 2017-18    | BOY       | Benchmark | 79%  | 87% | 96% | 87%  | 88% | 95% | 96% |
|            |           | Strategic | 11%  | 4%  | 1%  | 4%   | 3%  | 2%  | 2%  |
|            |           | Intensive | 10%  | 9%  | 3%  | 9%   | 9%  | 4%  | 2%  |
|            | MOY       | Benchmark | 73%  | 76% | 92% | 86%  | 82% | 93% | 96% |
|            |           | Strategic | 10%  | 8%  | 3%  | 5%   | 8%  | 3%  | 2%  |
|            |           | Intensive | 16%  | 15% | 5%  | 9%   | 10% | 3%  | 2%  |
|            | EOY       | Benchmark | 75%  | 75% | 90% | 88%  | 75% | 90% | 96% |
|            |           | Strategic | 13%  | 10% | 5%  | 3%   | 14% | 7%  | 2%  |
|            |           | Intensive | 11%  | 15% | 6%  | 9%   | 11% | 3%  | 2%  |
| Net Change | Benchmark | -3%       | -12% | -6% | 2%  | -13% | -5% | 0%  |     |
|            | Strategic | 2%        | 6%   | 4%  | -1% | 12%  | 5%  | 0%  |     |
|            | Intensive | 1%        | 6%   | 3%  | 0%  | 2%   | 0%  | 0%  |     |

EOY



**Data not yet updated to 2017-18 school year**

| District Stanford Achievement Test (National Percentile Ranking) by Grade |               |         |      |      |      |      |      |         |      |      |         |      |      |
|---|---------------|---------|------|------|------|------|------|---------|------|------|---------|------|------|
| Grade   | Campus        | Reading |      |      | Math |      |      | Science |      |      | Battery |      |      |
|   |               | 2018    | 2017 | 2016 | 2018 | 2017 | 2016 | 2018    | 2017 | 2016 | 2018    | 2017 | 2016 |
| K   | DRA 1         |         | 95   | 82   |      | 83   | 70   |         | 82   | 69   |         | 88   | 76   |
|   | DRA 2         |         | NA   | 92   |      | NA   | 84   |         | NA   | 81   |         | NA   | 86   |
|   | WV 1          |         | 73   | 66   |      | 69   | 53   |         | 74   | 49   |         | 60   | 57   |
|   | WV 2          |         | 59   | 75   |      | 62   | 62   |         | 57   | 60   |         | 59   | 66   |
|   | Kinder Center |         | 81   | NA   |      | 70   | NA   |         | 72   | NA   |         | 75   | NA   |
|   | Salem         |         | 75   | NA   |      | 63   | NA   |         | 69   | NA   |         | 70   | NA   |
| 1st   | DRA 1         |         | 69   | 74   |      | 81   | 88   |         | 60   | 75   |         | 70   | 77   |
|   | DRA 2         |         | 72   | 75   |      | 88   | 86   |         | 75   | 76   |         | 76   | 77   |
|   | WV 1          |         | 39   | 59   |      | 59   | 71   |         | 42   | 60   |         | 37   | 60   |
|   | WV 2          |         | 50   | 50   |      | 74   | 69   |         | 52   | 59   |         | 58   | 58   |
|   | Salem         |         | 57   | 69   |      | 74   | 80   |         | 56   | 73   |         | 62   | 71   |
|   | 2nd           | DRA 1   |      | 72   | 62   |      | 79   | 69      |      | 72   | 64      |      | 74   |
| DRA 2   |               |         | 74   | 74   |      | 84   | 82   |         | 74   | 76   |         | 74   | 74   |
| WV 1  |               |         | 38   | 49   |      | 50   | 42   |         | 46   | 42   |         | 43   | 46   |
| WV 2  |               |         | 35   | 45   |      | 40   | 50   |         | 37   | 40   |         | 41   | 46   |
| Salem   |               |         | 59   | 56   |      | 66   | 57   |         | 60   | 48   |         | 61   | 57   |

**D1 Behavior Data 2017-18**

| Title                               | Grand Total |                        |
|-------------------------------------|-------------|------------------------|
| Abusive behavior or language        | 1           | Inappropriate Language |
| Defiance                            | 8           | Disruptive Behavior    |
| Fighting and/or physical aggression | 41          | Fighting with Student  |
| Harrassment/Teasing/Bullying        | 10          | Bullying               |
| Inappropriate or foul language      | 10          | Inappropriate Language |
| Other                               | 40          | Other                  |
| Overt Defiance                      | 29          | Disrespecting adult    |
| Physical Contact                    | 42          | Fighting with Student  |
| Property Misuse or Destruction      | 48          | Vandalism              |
| <b>Grand Total</b>                  | <b>229</b>  |                        |

| <b>2018 Parent Survey Results - Draper 1 n=237</b>              |        |                |           |         |              |                   | 2017 Results |
|---|--------|----------------|-----------|---------|--------------|-------------------|--------------|
|   | VS + S | Very Satisfied | Satisfied | Neutral | Dissatisfied | Very Dissatisfied | VS + S       |
| 1. The overall performance of the school                        | 94%    | 64%            | 30%       | 5%      | 1%           | 0%                | 93%          |
| 2. The APA curriculum   | 97%    | 70%            | 27%       | 2%      | 1%           | 0%                | 94%          |
| 3. The APA teachers overall                                     | 95%    | 70%            | 24%       | 5%      | 1%           | 0%                | 93%          |
| 4. The APA instructors overall                                  | 91%    | 62%            | 29%       | 8%      | 0%           | 0%                | 86%          |
| 5. Children feel they can approach the front office personnel   | 94%    | 77%            | 17%       | 5%      | 1%           | 0%                | 91%          |
| 6. Parents are able to obtain information from the front office | 97%    | 84%            | 13%       | 3%      | 0%           | 0%                | 97%          |
| 7. APA's overall communication with parents                     | 92%    | 73%            | 19%       | 5%      | 2%           | 1%                | 92%          |
| 8. APA's overall academic program                               | 95%    | 75%            | 21%       | 4%      | 0%           | 0%                | 94%          |
| 19. Extent to which   | 89%    | 61%            | 28%       | 8%      | 1%           | 2%                | 80%          |



|  |     |     |     |     |    |    |     |
|--|-----|-----|-----|-----|----|----|-----|
| the school facility is kept clean and in good repair                                   | %   |     |     |     |    |    |     |
| 20. The behavior of the students at school   | 97% | 57% | 29% | 10% | 3% | 0% | 88% |
| 21. The pride and responsibility shown by students toward the school                   | 91% | 66% | 25% | 7%  | 2% | 0% | 90% |
| 22. The extent to which you feel your child is safe in the building and on the grounds | 87% | 67% | 21% | 8%  | 2% | 2% | 82% |
| 23. Opportunities for parent classroom involvement                                     | 91% | 70% | 21% | 7%  | 2% | 0% | 94% |
| 24. Ease with which parents can get involved with the school                           | 90% | 71% | 19% | 6%  | 3% | 1% | 93% |
| 25. The extent to which you feel up-to-date about what is happening at the school      | 92% | 71% | 21% | 5%  | 1% | 1% | 93% |
| 26. The block scheduling of elementary math, reading, and spelling                     | 94% | 74% | 19% | 6%  | 0% | 0% | 93% |
| 27. The school's performance in reinforcing the values taught at APA                   | 92% | 73% | 18% | 5%  | 2% | 1% | 94% |
| 28. The extent to which school rules are fair and enforced                             | 89% | 66% | 23% | 8%  | 2% | 1% | 87% |
| 29. School uniforms help daily preparation for school                                  | 92% | 79% | 14% | 5%  | 2% | 0% | 89% |
| 30. School uniforms improve my child's education experience                            | 86% | 70% | 16% | 10% | 3% | 1% | 79% |

|   |     |     |              |     |    |    |     |
|---|-----|-----|--------------|-----|----|----|-----|
| 31. Sports teams are an important aspect of APA's program | 58% | 41% | 17%          | 30% | 8% | 4% | 85% |
|   | Yes | No  | I Don't Know |     |    |    | Yes |

| 2018 Parent Survey Results - ELC   | N=58   |          |
|--|--------|----------|
|  | VS + S | DS + VDS |
| The overall performance of the school  | 96.60% | 1.70%    |
| The APA curriculum   | 96.60% | 1.70%    |
| The APA teachers overall   | 98.30% | 1.70%    |
| The APA instructors overall  | 98.30% | 1.70%    |
| Children feel they can approach the front office personnel                         | 91.40% | 3.40%    |
| Parents are able to obtain information from the front office                       | 91.40% | 3.40%    |
| APA's overall communication with parents   | 96.60% | 3.40%    |
| APA's overall academic program   | 96.60% | 1.70%    |
| Extent to which the school facility is kept clean and in good repair               | 91.40% | 1.70%    |
| The behavior of the students at school   | 94.80% | 1.70%    |
| The pride and responsibility shown by students toward the school                   | 98.30% | 1.70%    |
| The extent to which you feel your child is safe in the building and on the grounds | 91.40% | 1.70%    |
| Opportunities for parent classroom involvement                                     | 96.60% | 0.00%    |
| Ease with which parents can get involved with the school                           | 93.10% | 1.70%    |
| The extent to which you feel up-to-date about what is happening at the school      | 98.30% | 0.00%    |
| The block scheduling of elementary math, reading, and spelling                     | 96.60% | 1.70%    |
| The school's performance in reinforcing the values taught at APA                   | 96.60% | 1.70%    |
| The extent to which school rules are fair and enforced                             | 91.40% | 3.40%    |
| School uniforms help daily preparation for school                                  | 87.90% | 5.20%    |
| School uniforms improve my child's education experience                            | 77.60% | 10.30%   |
| Sports teams are an important aspect of APA's programs                             | 46.60% | 8.60%    |
|  |        |          |
| I would recommend APA to good friends  | 100%   |          |
| I plan on keeping my children at APA through 9th grade                             | 86.20% |          |
| I plan on keeping my children at APA through 12th grade                            | 77.20% |          |
|  |        |          |